

Please read and understand this instruction manual thoroughly before using this product.

For Mini-Z ASF 2.4GHz Series and dNaNo FX Series models

I.C.S. USB Adaptor Set Manual



Instruction Manual
No. 82080

This product is used to connect Mini-Z ASF 2.4GHz series or dNaNo FX series models to a personal computer, and through a special software program it can adjust steering and throttle settings.

*Standard settings are set at time of shipment.

●System Requirements

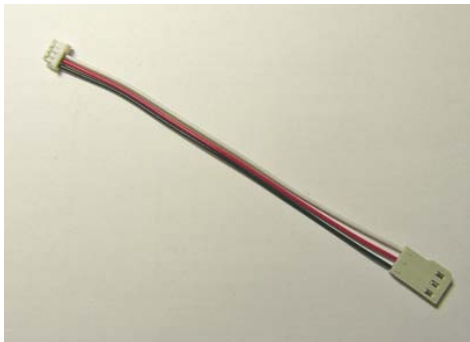
- Computer with Microsoft Windows 2000 or Windows XP and one available USB port (1.1 or 2.0).
- Windows 2000 or Windows XP (Normal function with emulators is not guaranteed).
<This software has not been fully confirmed with the operation on Windows Vista Home Premium Edition and Windows 7 Home Premium OS systems. Please note that this software is not guaranteed to work with the mentioned 2 OS systems.
- CD-ROM Drive

●Before Use

- KYOSHO CORPORATION accepts no responsibility for any consequences resulting from the use of this product. By using this product the user accepts full responsibility.
- Even if KYOSHO CORPORATION receives a report relating to malfunction or other issues, it gives no undertaking to repair, modify or add functionality to the product.
- Company or organization names, and product names referred to in this instruction manual are the trademarks or registered trademarks of the respective companies or organizations.
- When used with Mini-Z ASF 2.4GHz series or dNaNo FX series models, this software is provided at no charge. However, the copyright of this software is owned by Kondo Kagaku Corporation and therefore unauthorized copying, sharing or reverse engineering or similar activities are prohibited.
- Modifications may be made due to improved display screen performance.

●Set Contents

- 4-pin Cable



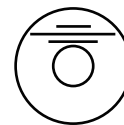
- Extension Cable



- ICS USB Adapter



- CD-ROM



●Required for Operation

- Mini-Z ASF 2.4 GHz series or dNaNo FX series model



●Preparations required before use

◆Connect ICS USB adapter and install the software driver

(This enables the ICS USB Adapter to work on your computer)

- Plug the ICS USB Adapter into the USB port on the computer. The USB adapter may not function properly if using a USB hub or a USB extension cable.
- If there is more than one USB port on your computer, try to use the same USB port for the USB Adapter each time. Using a different port may require the software driver to be re-installed.
- These instructions relate to standard computer screen settings and may differ according to your computer setup or customized screen settings.

1. Connect the ICS USB Adapter directly to the USB port on the computer.



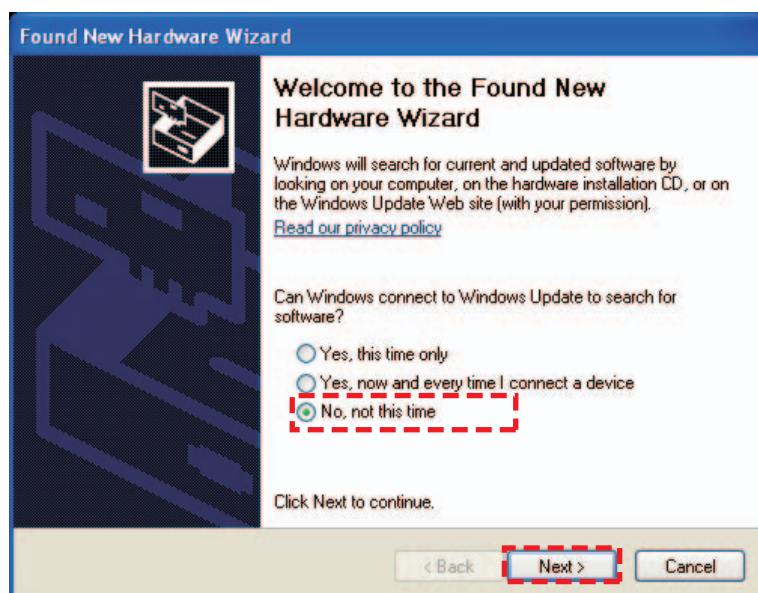
- 'Found New Hardware Wizard' should appear in a text balloon on the screen.



2. Click on the text balloon.

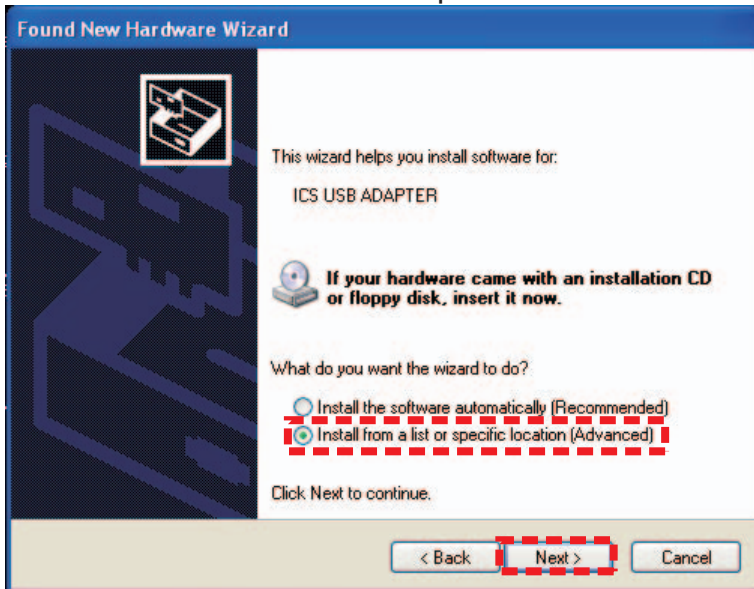
- A window with the Found New Hardware Wizard should then be displayed.

3. Choose 'No, do not connect at this time' and then click Next.

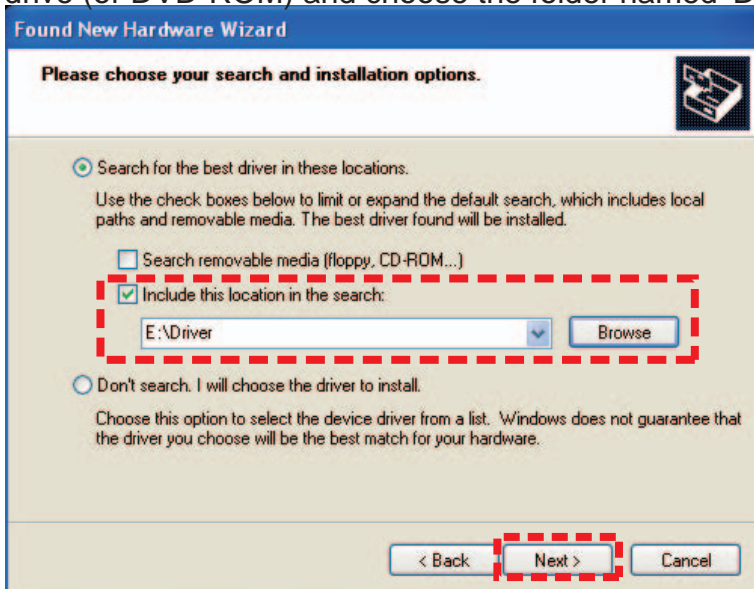


- If your computer is not connected to the internet, the screen to the left will not be displayed. Proceed to step 4.

4. Choose 'Install from a list or specific location' and click Next.

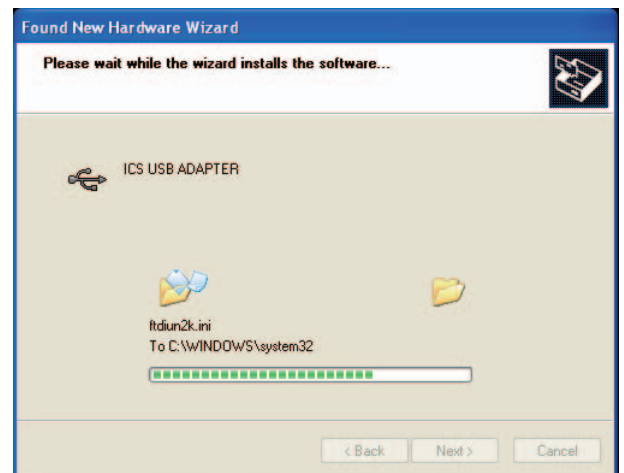
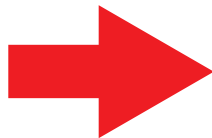


5. Choose 'Include this location in the search' and click 'Browse'. Insert the CD-ROM into the CD-ROM drive (or DVD-ROM) and choose the folder named 'Driver' and click Next.



6. Click 'Continue'.

- Installation will commence.

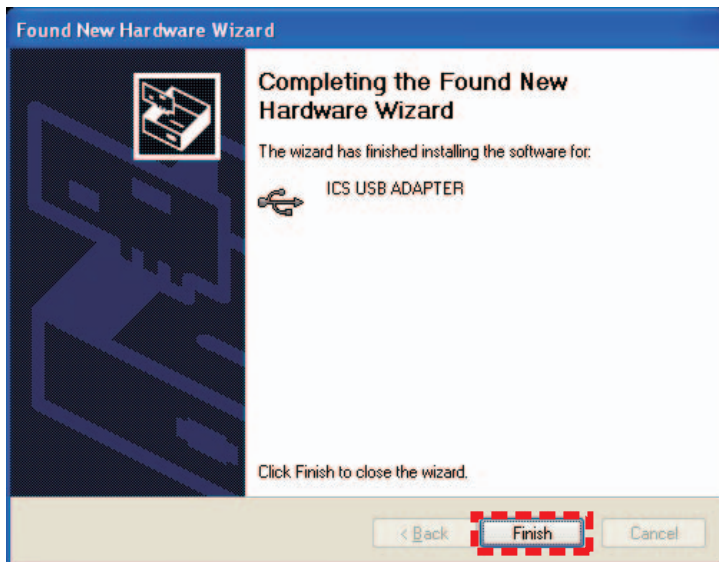


In some cases 'Insert disk' or 'File Required' messages are displayed during installation. If this occurs, please follow the steps below.

- ① If 'Insert Disk' message window appears, click OK.
 - ② If 'File Required' message window appears, click 'Browse' and then after clicking the 'Driver' folder on the CD-ROM, click 'ftdibus.sys' or 'ftser2k.sys' then click 'Open'.
- Please refer to this instruction manual and the steps that follow to complete installation.

7. Click 'Finish'

- The installation may take a few minutes to finish. After installation is complete, the screen shown below is displayed.



8. After completing installation of the ICS USB Adapter, perform the installation of the USB Serial Port driver.

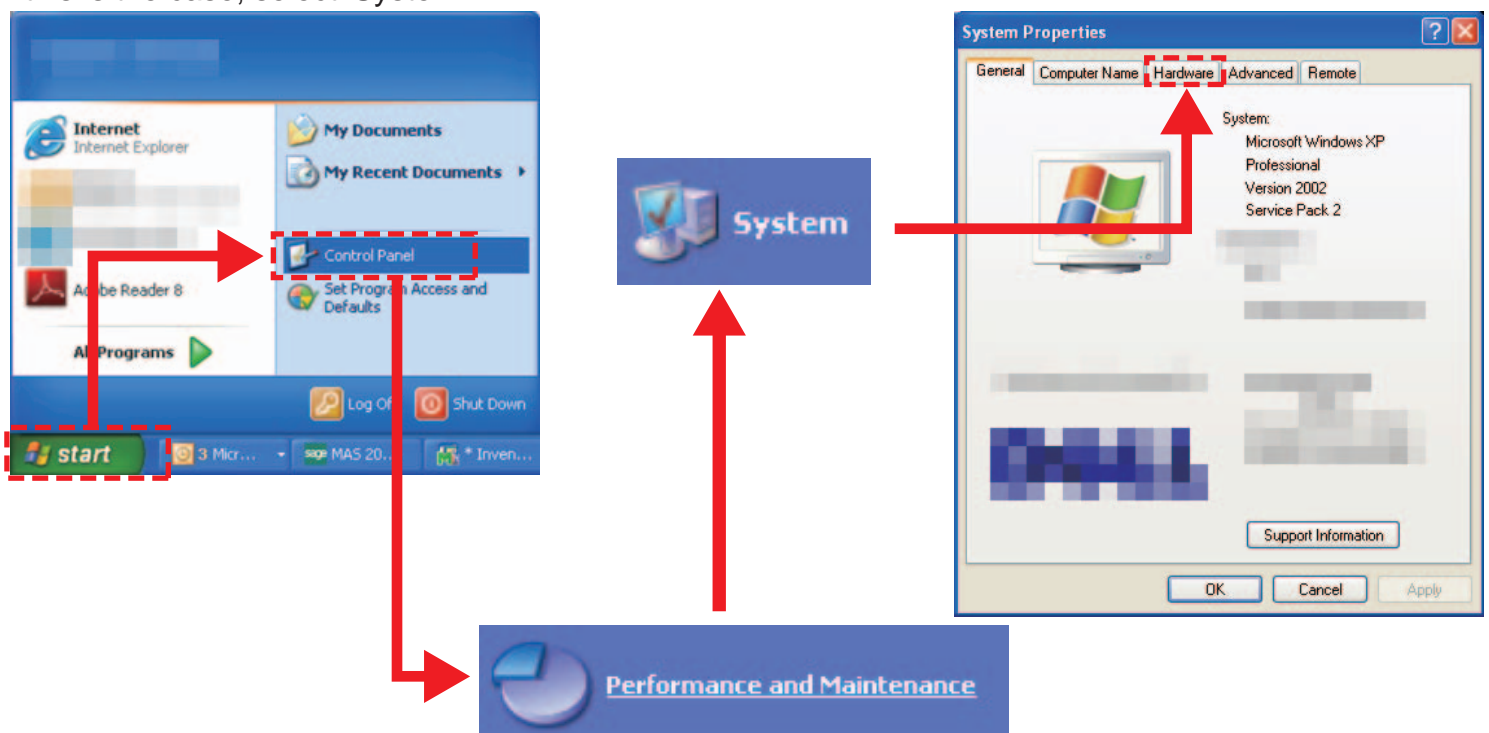
- Just as in step 2 the balloon text message 'Found New Hardware' should appear. Click the balloon text and repeat steps 2 - 7. The message windows displayed may be slightly different, but the steps are the same.



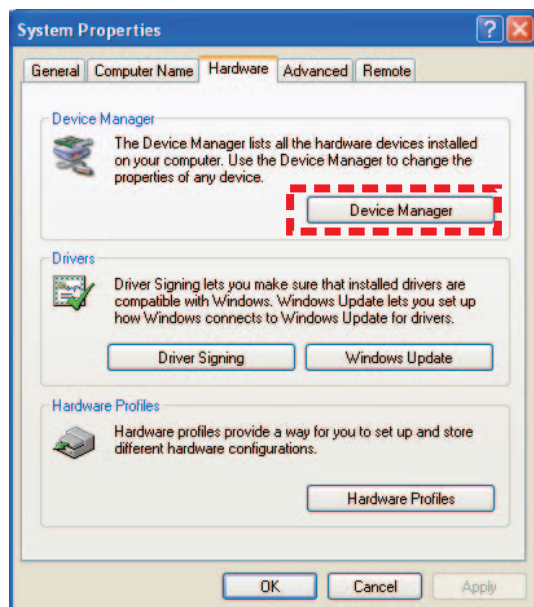
◆ Confirm COM port setting

(Checking the ICS USB Adapter has been properly installed)

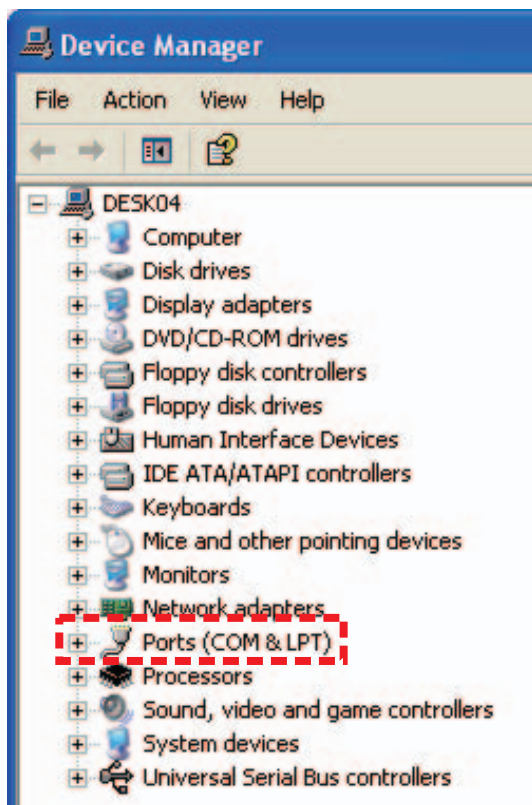
1. Click : Start > Control Panel > Performance & Maintenance > System and then click the 'Hardware' tab.
- Depending on your computer's settings, 'Performance & Maintenance' option may not be displayed. If this is the case, select 'System'.



2. Click 'Device Manager'.
- Device Manager window is displayed.



3. Double-click 'Port' and confirm that 'ICS ADAPTER (COM 'X')' is displayed.



- 'X' indicates the number that the software will use. Write it down as it will need to be referred to later. These instructions use the number 3 as an example for 'X', but your computer or USB port may assign a different number. Make sure to check the port number used on your computer.
- If the ICS USB Adapter is not installed correctly, it will not be displayed. In this case, repeat the 'ICS USB Adapter connection and driver installation' .

◆Downloading / Copying the Software

●NOTICE

- The software is subject to change for upgrade work. Download the latest software with referring “How to download” on the next page.

◇Special Software Program

-KYOSYO-KO_ASFmanager115.exe

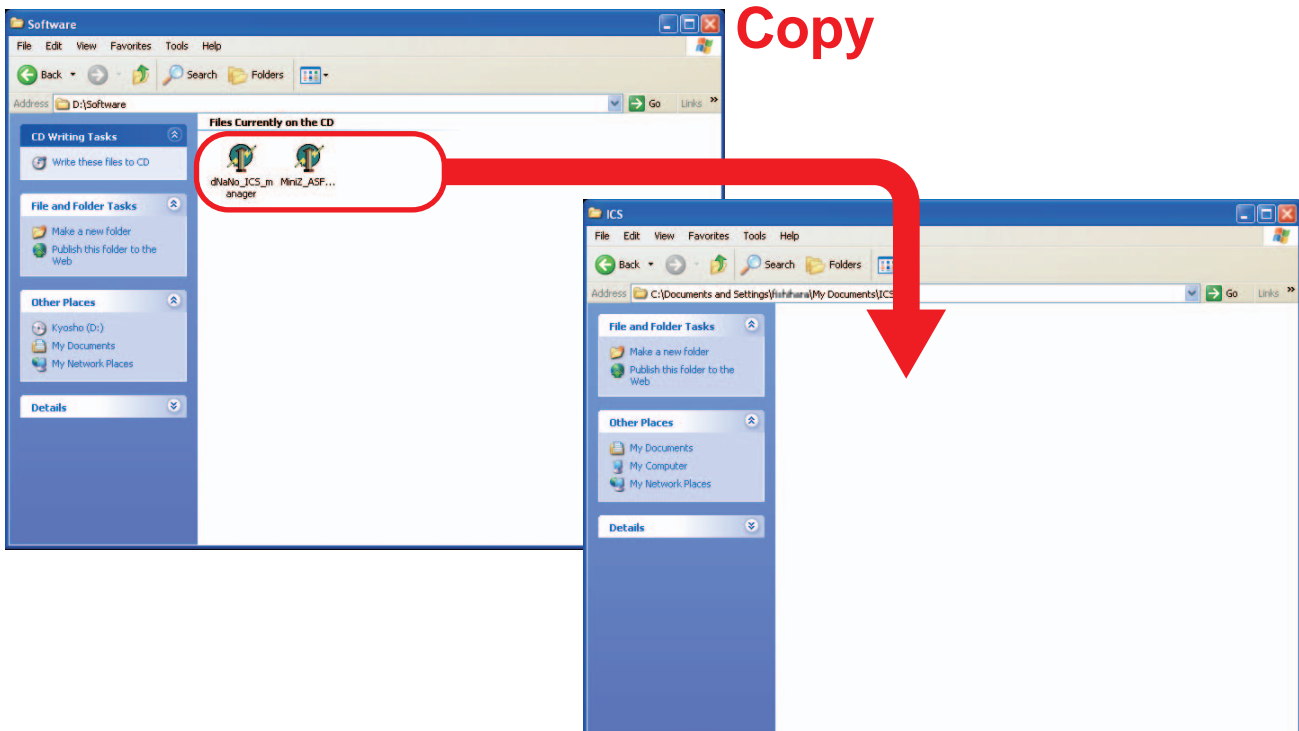
- Common software for all Mini-Z and dNaNo series



◇How to copy

- Make sure the software program is copied to your computer before you use it. The software may not function properly or show errors and not record data if the software program is started directly from the CD-ROM.

1. Open the 'Software' folder on the CD-ROM and copy the software to a location on your computer.



2. Confirm that the saved folder is indicated by the icon below.



◇How to download

Visit below URL and download the software on your computer.

- Mini-Z ASF 2.4GHz Series

<http://www.kyosho.com/mini-z-support/> (Mini-Z series support home page)

<http://www.kyosho.com/mini-z-buggy-support/> (Mini-Z Buggy series support home page)

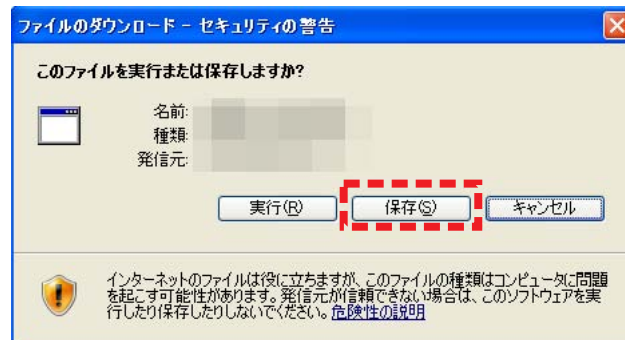
- dNaNo FX Series

<http://www.dnano.jp/support/> (dNaNo series support home page)

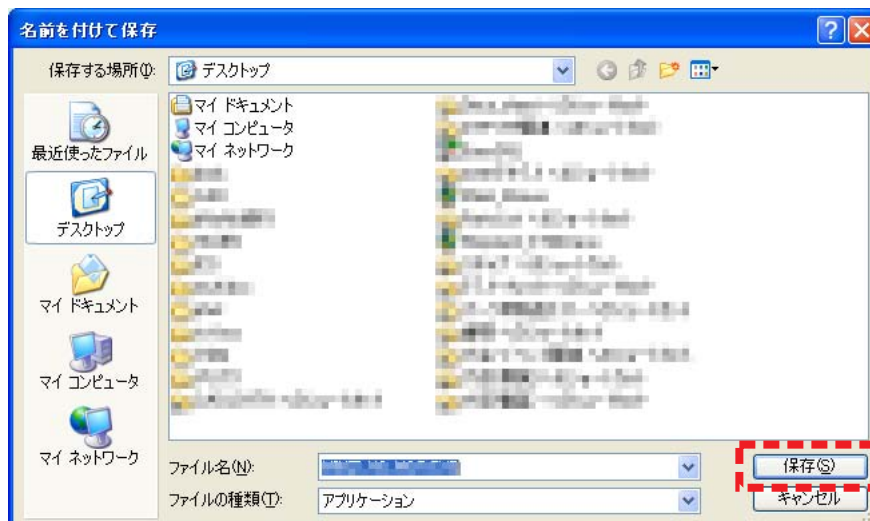
(Above URL may be subject to change.)

1. Click the software linked icon on the home page.

- After the download window is displayed, click 'save' .



2. Save the software program on your desktop or your selected folder.

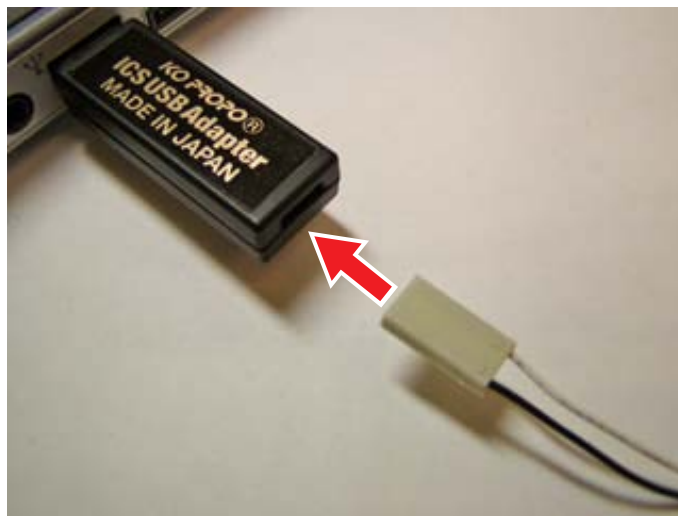


3. Confirm that the saved folder is indicated by the icon below.

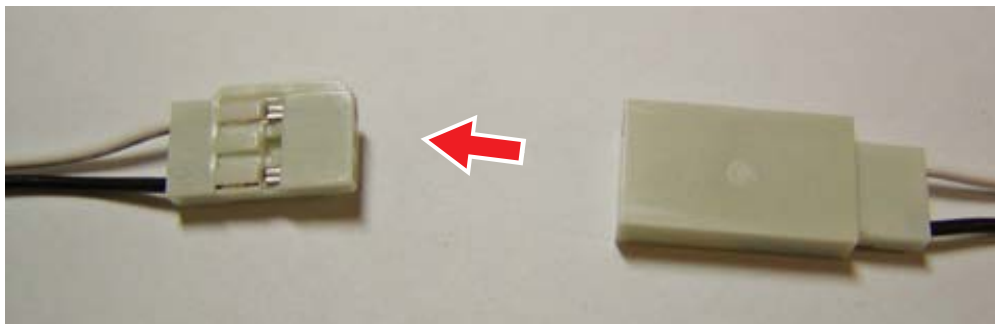


●How to connect the model to the computer and use the software

1. Connect the Extension Cable to the ICS USB Adapter



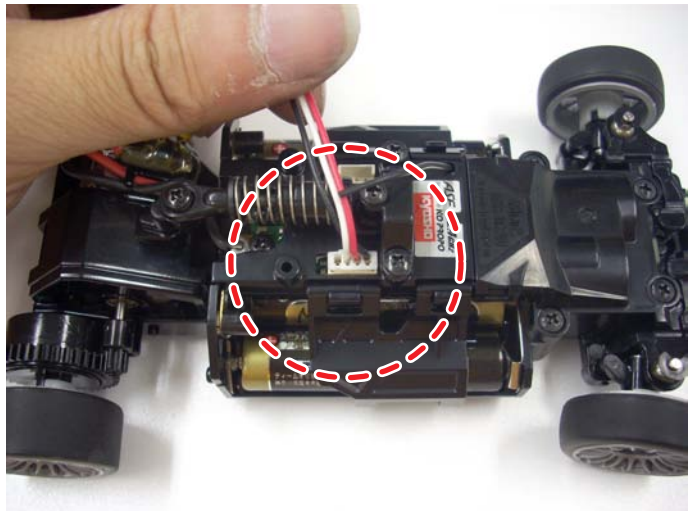
2. Connect the I.C.S. Cable to the Extension Cable.



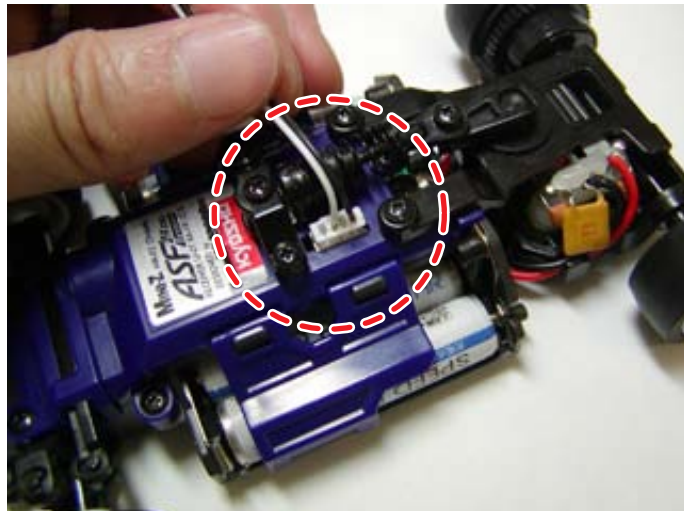
3. Connect the I.C.S. Cable to the I.C.S. Connector on the (Mini-Z or dNaNo) model.

- The connectors are designed to prevent reverse connection. If connection seems too tight, disconnect and check the direction of the connectors, then re-connect.

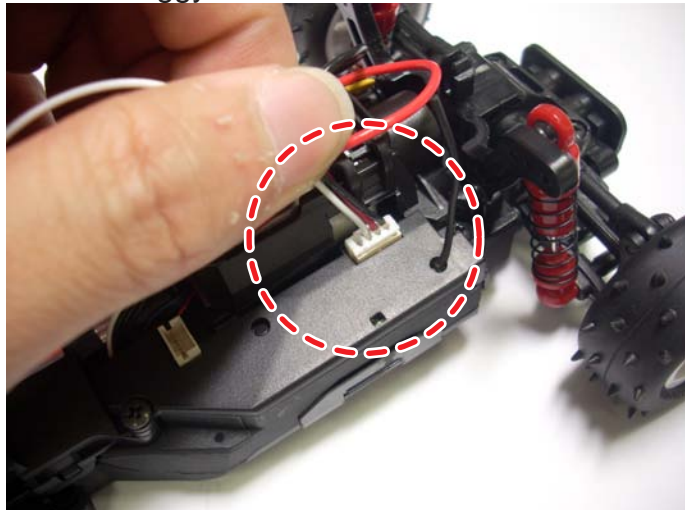
<Mini-Z MR-03 Series>



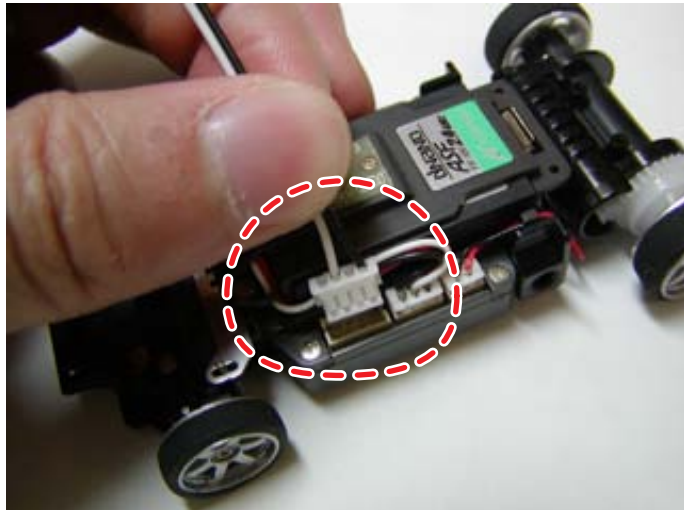
<Mini-Z ASF 2.4GHz Series>



<Mini-Z Buggy Series>



<dNaNo FXSeries>

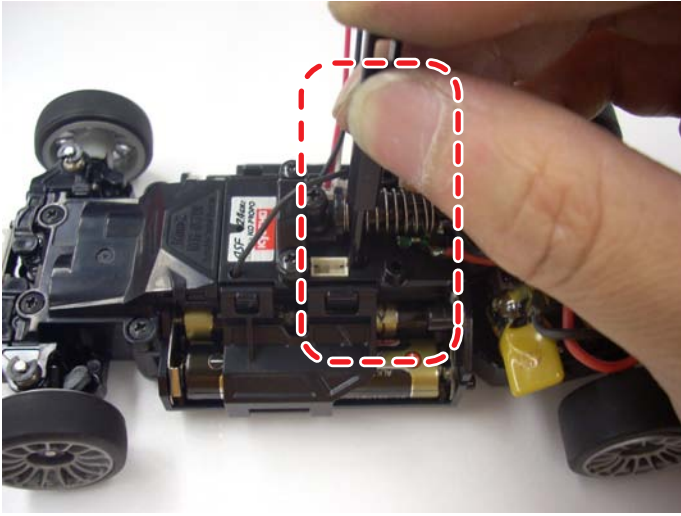


➔Next Page

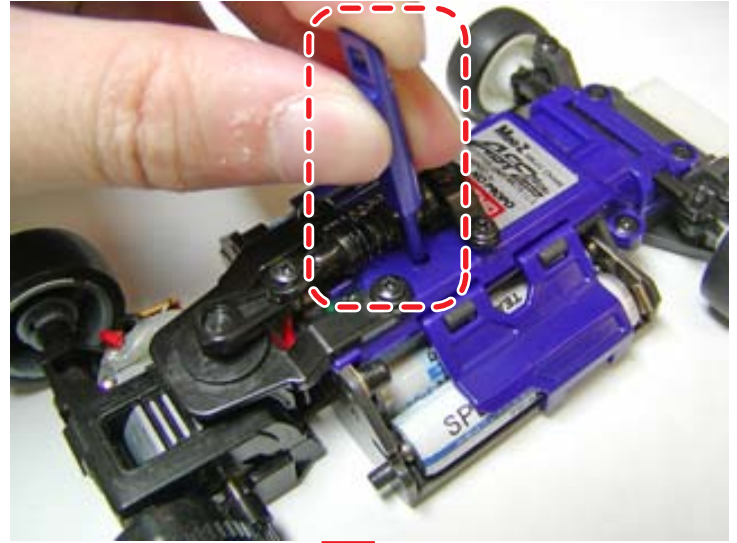
4. While pushing the pairing switch down, turn the power ON.

- Check that the Pairing LED indicator is on. When the LED indicator is on, data is able to be transmitted. If the LED indicator is not on, repeat step 4. For the location of the LED indicator on the chassis, refer to the instruction manual for each model.

<Mini-Z MR-03 Series>

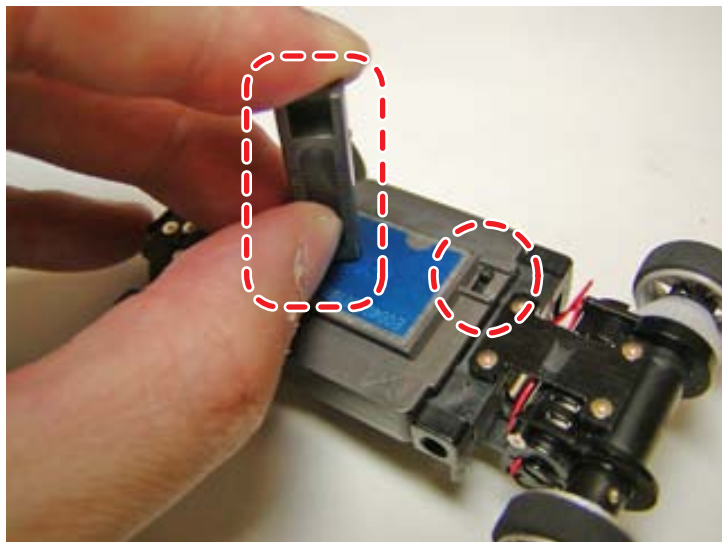


<Mini-Z ASF 2.4GHz Series>

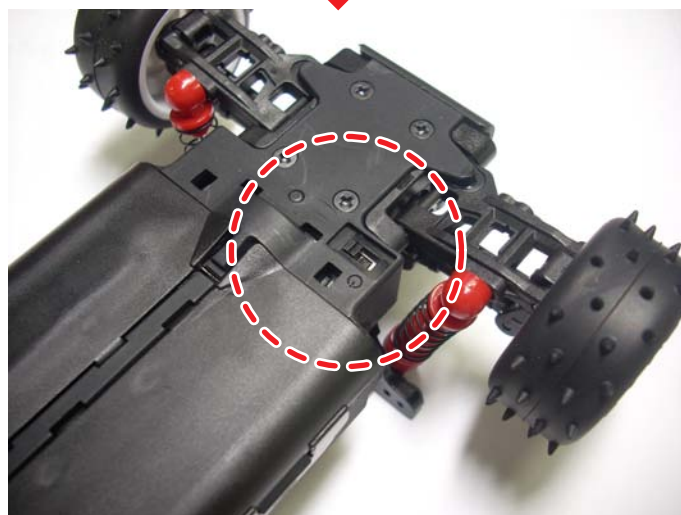
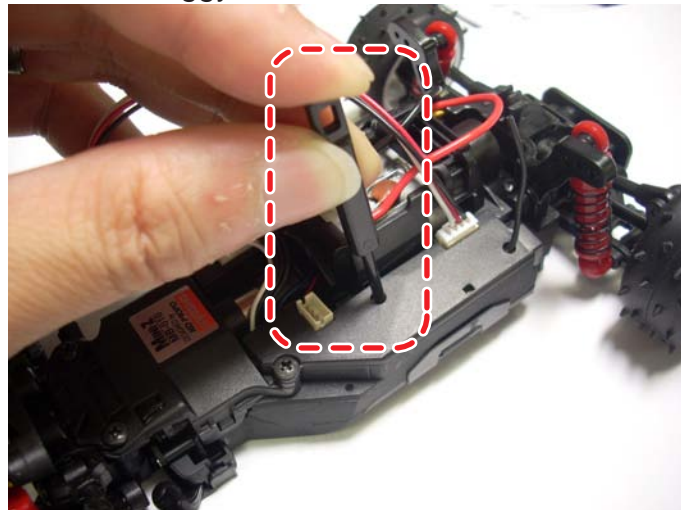


➔<Mini-Z Buggy Series><dNaNo FXSeries>
Next Page

<dNaNo FX Series>



<Mini-Z Buggy Series>



5. Start the software program that was copied at 'Copying the software'.

- Mini-Z MR-03 Series

-Double-click "KYOSYO-KO_ASFmanager115.exe"



●Explanation of Software Program Interface

When each function of the software is used, the following window is displayed.

- First complete the 'COM(M)' settings (refer to 'COM(M)').
- The screen displayed below is the default setting at time of shipment.
- Be sure to select the appropriate chassis type at "CHASSIS" parameter. Malfunction might be caused if settings are written to the chassis with the wrong CHASSIS parameter. When this problem happens, rewrite the settings to the chassis after selecting the correct chassis type.

For Mini-Z Monster (EX) and Overland sereis, the initial values of setting parameters vary depending on the production lot. Please read the initial setting first and save it in a file (or take a note) before modifying any parameters.

If you use an MR-02EX chassis, please make sure "MR-02EX" is selected.

*Select "MR-02" When you change the RC unit to spare parts (No.MZ212).

◆Names and functions of parameters

The parameters shown and their initial (factory default) values vary depending on the chassis type selected.

• CHASSIS

Switches the chassis type in accordance with your chassis. Please make sure you have selected the correct chassis type before writing parameters. After changing this parameter, all the other parameters will be reset to the factory preset values.

• GAIN

Changes the characteristics of the steering servo. Adjust settings left to right on the screen from Min, Med, Strong. This setting controls the strength the servo uses to retain its current position in response to external force.

• SPEED (Servo Speed)

Adjusts the speed at when the servo responds to transmitter signals. Adjust settings left to right on the screen from Slow, 2, 3, 4, Fast to set the servo response speed.

• PNCH (Punch)

Sets the servo' s initial response speed. Settings from 1 (low) to 10 (High) are available. Lower settings are similar to analog servo movement. If steering control is too sharp and makes control difficult, try a lower setting.

• D.BAND (Dead Band)

This sets the width that initiates servo response to external force. Narrow, Mid and Wide settings are available. Adjust from right to left on the screen to reduce the width of the dead band and thereby increase the sensitivity of the servo's movement to external force.



• DUMP (Dumping)

This sets the characteristics of the servo when it is stopped. Smooth setting brakes the servo to stop just before the target position, while Over setting brakes the servo on the target position so it goes slightly past and then returns.

• D.FREQ (Motor Drive Frequency)

Sets the motor drive frequency on the throttle to 5kHz, 2.5kHz or 1.2kHz. Changes the frequency of the entire throttle input side. Generally speaking, lower frequency settings produce higher torque and lower energy efficiency.

- **NUTRAL (Neutral)**

Adjust the width of the neutral area for the throttle trigger. Narrow, Mid and Wide settings available. Settings to the left side of the screen are for narrower neutral width settings.

- **V.INERTIA (Virtual Inertia Control Change Ratio)**

Adjusts the distance the model travels after the throttle has been released. Five stage settings from Strong, 2, 3, 4, and OFF are available. Inertia settings increase from right to left with OFF setting removing any control for maximum inertia. Small RC models can stop quickly when the throttle is released so this feature enables you to find a more natural feeling. This is called Virtual Inertia Control.

- **BAKTIM (Back waiting time)**

Adjust the waiting time in neutral before reversing. Five stage settings from 1 ~ 5 are available. (1=0 second) ~ (5=0.2 second)

- **ST GAIN (Gyro Gain : Steering)**

Adjusts the amplification factor of the gyro unit steering system (sold separately). 0 (Low) ~ 255 (High) setting range is available. The amplification factor is the amount of movement of the gyro unit and higher settings produce more steering correction (counter).

- **TH.GAIN (Gyro Gain : Throttle)**

Adjusts the amplification factor of the gyro unit steering system (sold separately). 0 (Low) ~ 255 (High) setting range is available. The amplification factor is the amount of movement of the gyro unit and higher settings produce more steering correction (counter).

- **COM(M)**

Specifies the USB port number used by the software on the computer. If switched OFF or the specified port number is incorrect, connection with the model is not possible. Check the connection port by referring to 'Checking COM Port' .

◆ Button Names and Functions



Program

The connection settings displayed now will be saved on the chassis. As these settings will overwrite the existing settings, saving the existing settings from the chassis is recommended.



Read

Saves the setting data from the chassis to the computer it is connected to. Please note that saving data will overwrite any data that is displayed on the screen.



Reset

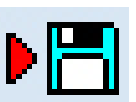
Returns all settings on the connected chassis back to the factory default settings. Remember this when using this function.

*After clicking 'Reset' always click 'Program'. Just clicking 'Reset' will not reflect the changes.



Load

Displays the data saved on the computer's hard disk.



Save

Saves the setting data currently displayed on the screen to the computer's hard disk.

This will not save any setting data onto the chassis. You can only save one set of data on the chassis at a time. Keeping multiple sets of data saved on the computer is recommended.



Exit

Closes the software program.