

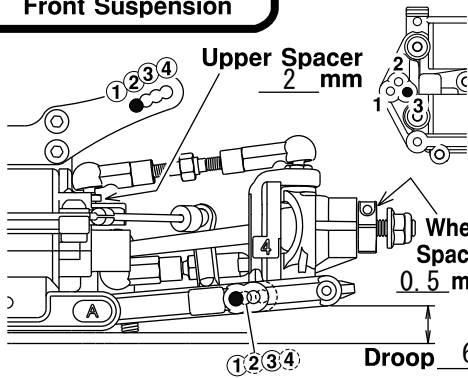
Name  
Shinnosuke Adachi

Date  
2006. 8. 18

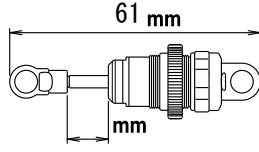
Truck / CITY  
谷田部アリーナ

Event

### Front Suspension



Shock Piston 1.1- 3  
Shock Oil # 300  
Shock Spring ブルー  
Diaphragm std  
Pressure Form  Form



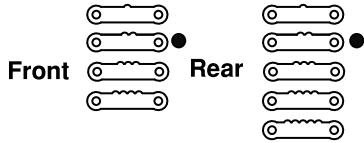
Camber Angle 1.5°  
Toe Angle 0°  
Sway bar  1.0mm

Front Diff.  
 Spool  
 Oneway  
 Diff.

Battery Placement  
 Forward  
 Rear

Post High Spacer  
 Up  
 Low

### Sus. Holder Spacer



### Sus. Holder Bush Front



### Sus. Holder Bush Rear

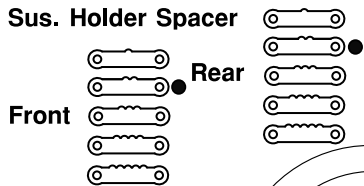


Ride Height 4.0 mm

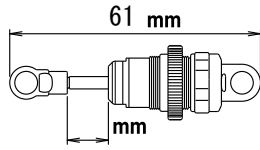
Sus. Arm Spacer Front 2 mm  
Rear 1 mm

Crank Spacer 2 mm  
Bump Steer Spacer 0 mm

### Rear Suspension



Shock Piston 1.1- 3  
Shock Oil # 300  
Shock Spring ブルー  
Diaphragm std  
Pressure Form  Form



Camber Angle 1.5°  
Toe Angle 3°  
Sway bar  1.0

Upper Spacer 1 mm

Upper Spacer 0 mm

Wheel Spacer 0.5 mm

Hub Carrier Height

Up

Middle

Down

Droop 5 mm

Sus. Arm Spacer Front 1 mm  
Rear 2 mm

Hub Carrier Spacer Rear 1 mm

Ride Height 4.5 mm

Sus. Holder Bush Front (inC)

Sus. Holder Bush Rear (outE)

### Tire

Tire SOREX36R  
Inserts 039M  
Wheel YOKOMO プレジジョン  
Traction Compound 1st: コバトーン 2nd: FXII

### Comments

### Others

Motor G-スタイル G 2nd Gear Ratio : 2.5  
Pinion/Spur 41 / 88 Gear Ratio 5.36  
Battery SMC IB4200 ESC KO  
Body ライドマークIII 軽量 Wing ごくらく3ストレート

### Truck Condition

Smooth  Asphalt  
 Bumpy  Concrete  
 Low Traction  Carpet  
 Med. Traction  Indoor  
 High Traction  Outdoor

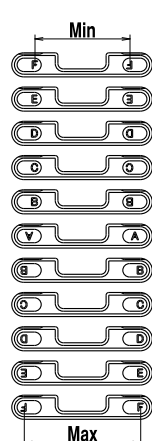
### Spring Rate

#30	Red	W5189-30
#32	Yellow	W5189-32
#34	Blue	W5189-34

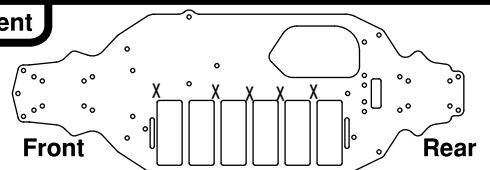
### Diaphragm



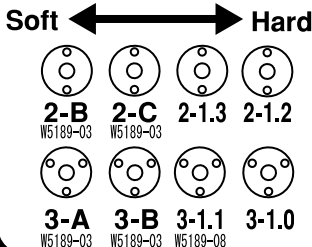
### Toe Angle



### Weight Placement



### Shock Piston



### Sway Bar

1.0	Nickel
1.1	Gold
1.2	Silver
1.3	Copper
1.4	Black
1.5	Golden
1.6	Chromium

		in					Out					
		FF	EE	DD	CC	BB	AA	BB	CC	DD	EE	FF
In	FF	0.0	0.5	1.0	1.5	2.0	2.5	3.0	3.5	4.0	5.0	5.5
	EE	-0.5	0.0	0.5	1.0	1.5	2.0	2.5	3.0	3.5	4.0	5.0
	DD	-1.0	-0.5	0.0	0.5	1.0	1.5	2.0	2.5	3.0	3.5	4.0
	CC	-1.5	-1.0	-0.5	0.0	0.5	1.0	1.5	2.0	2.5	3.0	3.5
	BB	-2.0	-1.5	-1.0	-0.5	0.0	0.5	1.0	1.5	2.0	2.5	3.0
Out	AA	-2.5	-2.0	-1.5	-1.0	-0.5	0.0	0.5	1.0	1.5	2.0	2.5
	BB	-3.0	-2.5	-2.0	-1.5	-1.0	-0.5	0.0	0.5	1.0	1.5	2.0
	CC	-3.5	-3.0	-2.5	-2.0	-1.5	-1.0	-0.5	0.0	0.5	1.0	1.5
	DD	-4.0	-3.5	-3.0	-2.5	-2.0	-1.5	-1.0	-0.5	0.0	0.5	1.0
	EE	-5.0	-4.0	-3.5	-3.0	-2.5	-2.0	-1.5	-1.0	-0.5	0.0	0.5
FF	-5.5	-5.0	-4.0	-3.5	-3.0	-2.5	-2.0	-1.5	-1.0	-0.5	0.0	