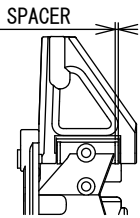
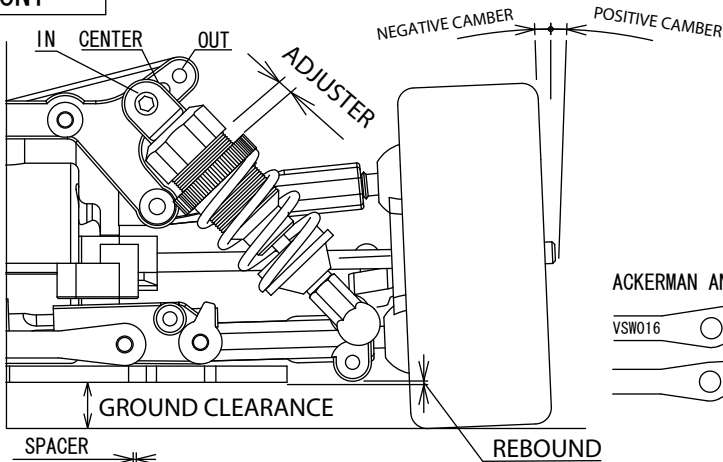


FW-05R

SETTING DATA SHEET Ver1.00

NAME	Take Kucyo service	TEMP	7 °C	ENGINE	OS12TR	MUFFLER	OS1031	MANIFOLD	KYOSHO
DATA	2004. 1. 11	HUMIDITY	40 %	HEAD CLEARANCE	Noma l	FUEL TYPE	BP		
TRACK	Kyosho Circuit	TRACTION	75 %	PLUG No.	OS P6	RADIO	M8		

FRONT

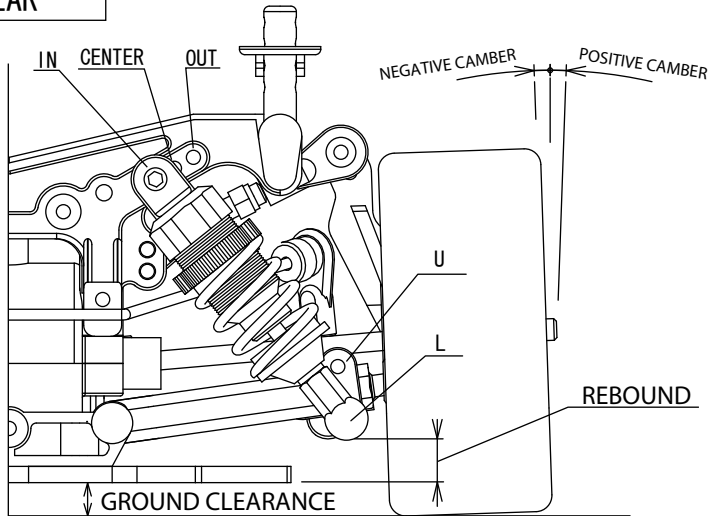


CASTER ANGLE	
2mm	10°
1mm	8°
0mm	6°

DIFF. (CLAY)	
RING GEAR	39T (40T)
ACKERMAN ANGLE	A (B) C
ST D/R	150 %

SHOCK OIL	(300) 350 400 450 500 550 600 700
SHOCK PISTON	Noma l
SPRING	Blue 92721
SPRING ADJUSTER	mm
SHOCK POS	U (IN) CENTER OUT L U L
CASTER ANGLE	1 mm
CAMBER ANGLE	OG / 1G 0 (0.5) 1.0 1.5 2.0
TOE ANGLE	IN a little
FRONT WIDTH	198 mm
REBOUND STOP	SPRING FULL
STABILIZER BAR	
TIRE TYPE	V30 INNER MOLD KYOSHO RED
TIRE SIZE	φ mm
WHEEL	
GROUND CLEARANCE	4.5 mm

REAR



RING GEAR 39T					
GEAR	TOTAL	GEAR	TOTAL		
20	50	7.50	25	45	5.40
20	51	7.65	25	46	5.52
21	50	7.14	26	45	5.19
21	51	7.28	26	46	5.30
22	50	6.81	27	45	5.00
22	51	6.95	27	46	5.11

RING GEAR 40T					
GEAR	TOTAL	GEAR	TOTAL		
20	50	7.69	25	45	5.54
20	51	7.85	25	46	5.66
21	50	7.33	26	45	5.33
21	51	7.47	26	46	5.44
22	50	6.99	27	45	5.13
22	51	7.13	27	46	5.24

CLUTCH WEIGHT	
SPRING	
CLEARANCE	mm
ADJ. NUT	mm

SHOCK OIL	300 350 400 450 (500) 550 600 700
SHOCK PISTON	NOMAL
SPRING	GREEN 92491
SPRING ADJUSTER	mm
SHOCK POS	IN CENTER (OUT)
SHOCK POS	U / (L)
UPPER ARM POS	IN (U/L) - OUT (U/L)
CAMBER ANGLE	OG / 1G 0 (0.5) 1.0 1.5 2.0 2.5 3.0
TOE ANGLE	-3°
REAR WIDTH	202 mm
REBOUND STOP	SPRING FULL
STABILIZER BAR	
REAR SUS. HOLDER	(H) L
DIFF OIL	#2,000 in Half
TIRE TYPE	V30 INNER MOLD KYOSHO RED
TIRE SIZE	φ mm
WHEEL	
GROUND CLEARANCE	5.0 mm
BODY	NSX2003
BODY POSITION	NOMAL
REAR SPOILER HEIGHT	NOMAL
REAR SPOILER ANGLE	NOMAL
GEAR	20 (21) 22 / 25 (26) 27
GEAR	50 (51) / 45 (46)
RING GEAR	39T (40T)
CLUCH SHOE	KC45 H SPRING