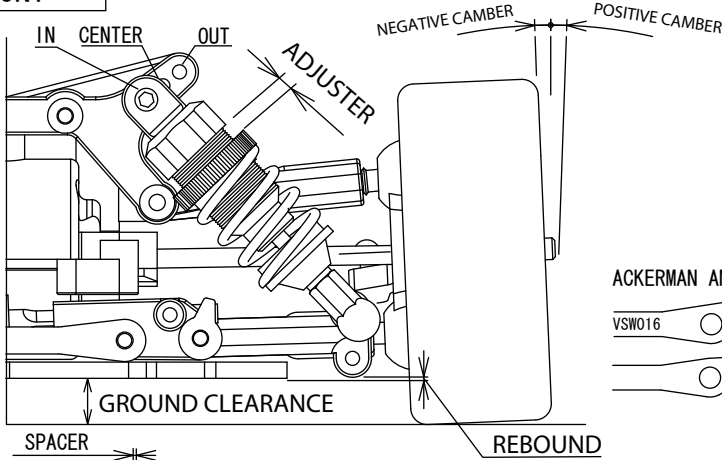


FW-05R

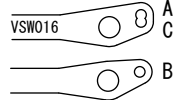
SETTING DATA SHEET Ver1.00

NAME	Takuya Ito	TEMP	12 °C	ENGINE	Mega 12	MUFFLER	VSW017	MANIFOLD	VSW009
DATA	2003. 12. 14	HUMIDITY	40 %	HEAD CLEARANCE	mm	FUEL TYPE	Tornado 20%		
TRACK	BOSS SPEED	TRACTION	80 %	PLUG No.	f-6	RADIO	SANWA M-8		

FRONT



ACKERMAN ANGLE

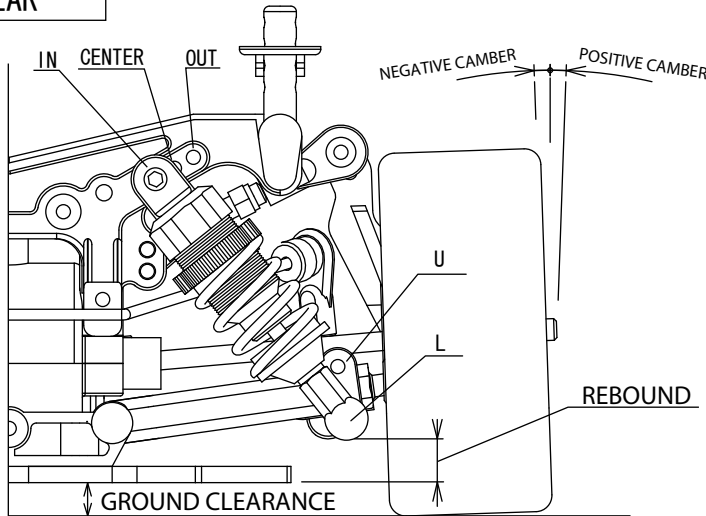


CASTER ANGLE	
2mm	10°
1mm	8°
0mm	6°

DIFF.	/	ONEWAY
RING GEAR	(39T)	40T
ACKERMAN ANGLE	A B (C)	
ST D/R		%

SHOCK OIL	300 (350) 400 450 500 550 600 700
SHOCK PISTON	φ 1.2 x 1
SPRING	S (B) G Long VZ073-4016
SPRING ADJUSTER	About 3 mm
SHOCK POS	(IN) CENTER OUT
CASTER ANGLE	1 mm
CAMBER ANGLE	(OG) 1G 0 0.5 1.0 (1.5) 2.0
TOE ANGLE	Out 1.5°
FRONT WIDTH	199.5 mm
REBOUND STOP	0 mm
STABILIZER BAR	● ○ ○ ○ ○
TIRE TYPE	GRP 35°
TIRE SIZE	φ 63 mm
WHEEL	GRP
GROUND CLEARANCE	5.0 mm

REAR



RING GEAR 39T					
GEAR	TOTAL	GEAR	TOTAL		
20	50	7.50	25	45	5.40
20	51	7.65	25	46	5.52
21	50	7.14	26	45	5.19
21	51	7.28	26	46	5.30
22	50	6.81	27	45	5.00
22	51	6.95	27	46	5.11

RING GEAR 40T					
GEAR	TOTAL	GEAR	TOTAL		
20	50	7.69	25	45	5.54
20	51	7.85	25	46	5.66
21	50	7.33	26	45	5.33
21	51	7.47	26	46	5.44
22	50	6.99	27	45	5.13
22	51	7.13	27	46	5.24

SHOCK OIL	300 350 400 450 (500) 550 600 700
SHOCK PISTON	φ 1.0 x 2 (Normal)
SPRING	S B (G)
SPRING ADJUSTER	About 2 mm
SHOCK POS	IN (CENTER) OUT
SHOCK POS	U / (L)
UPPER ARM POS	IN (U/L) - OUT (U/L)
CAMBER ANGLE	(OG) 1G 0 0.5 1.0 1.5 2.0 2.5 (3.0)
TOE ANGLE	One Side 2°
REAR WIDTH	199.5 mm
REBOUND STOP	+6 mm
STABILIZER BAR	SILVER (BLACK) GOLD
REAR SUS. HOLDER	(H) L
DIFF OIL	# 30,000
TIRE TYPE	GRP 35°
TIRE SIZE	φ 64 mm
WHEEL	GRP
GROUND CLEARANCE	5.5 mm
BODY	DODGE 2.1
BODY POSITION	
REAR SPOILER HEIGHT	
REAR SPOILER ANGLE	

CLUTCH WEIGHT	φ 4HOLE	GEAR	20 (21) 22 / 25 (26) 27
SPRING	For 4D	GEAR	50 (51) / 45 46
CLEARANCE	0.5 mm	RING GEAR	(39T) 40T
ADJ. NUT	0.8 mm	CLUCH SHOE	Gray