

MINI-Z AWD MA-030EVO Chassis Setting Data Sheet ver 2.0



Name	Date	Race	Class	Body	Transmitter
	2020/2/17			McLaren 12C	Noble NB4

Put a check mark in
Write the numerical value
where it should be.

Surface	Battery
Carpet <input checked="" type="checkbox"/> RCP	Dry Cell ()
Other ()	NiMH (SPEED HOUSE 800HV)

● Chassis Type

- Narrow
 Wide

● Wheelbase

- L LL

● Rear Suspension Arm

- Short Long

● Motor

- MZ603
 MZ604
 MZ605
 MZ606

○ Pinion Gear

- 15T
 17T
 19T
 21T

○ Spur Gear

- 27T
 29T
 31T

● Gyro Unit

- Equipped

● Ball Bearing

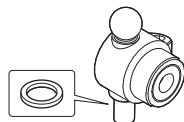
- Equipped

● Front Suspension

- Spring(MDW201)
 Soft (Red)
 Midium Soft (Purple)
 Midium (Green)
 Midium Hard (Orange)
 Hard (Yellow)

○ Sus limiter

- Have
 Nothing



○ Nuckle Arm

- Normal 0°
 1°
 2°
 3°

● Diff. Gear

- Gear (Normal)
 Ball Diff.
 One Way
 Rigid

● Front Wheel

- Part No. MDH100W-N15
 Off set +1.5 mm

● Front Tyre

- Narrow Wide
 High-Grip
 Racing Radial Low hight
Hardness 30 Outer Dia 23.5 mm

● Rear Suspension Holder

- 3° 4°

● Rear Suspension

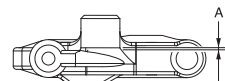
- Spring Soft (Red)
 Normal (Green)
 Hard (Yellow)

Spring Spacer

- 1mm pcs 2mm pcs
2mm pcs MDW106 2 pcs

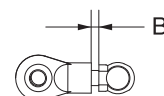
● Down Stop

- Length of A 0.5 mm



● Camber

- Length of B 1 mm



● Diff. Gear

- Gear (Normal)
 Ball Diff.
 One Way
 Rigid

● Rear Wheel

- Part No. MDH100W-W1
 Off Set +1.0 mm

● Rear Tyre

- Narrow Wide
 High-Grip
 Racing Radial
Hardness 30 Outer Dia 24.6 mm

● Other part

MDW101/106/108/110

● Memo

